



InTouch



TITCHFIELD & TITCHFIELD COMMON – Summer 2019

Planning mayhem as pollution fears put thousands of homes on hold

FEARS over dangerous levels of nitrates in the environment have halted building of thousands of homes across Fareham and South Hampshire

It's brought mayhem to the planning department already struggling to re-write the Draft Plan after Whitehall kept moving the goal posts.

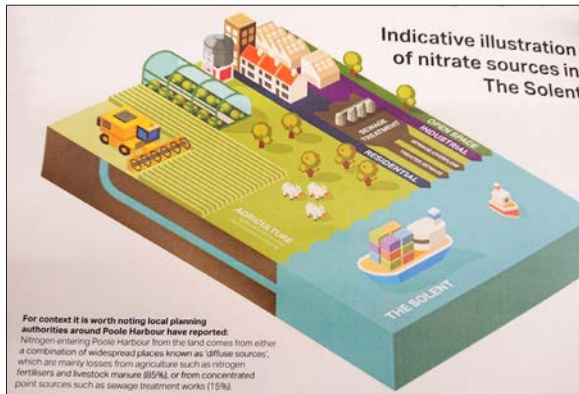
And it's a slap in the face for the Government that had ordered Fareham to find greenfield space for thousands of extra homes.

The Council's planning boss labelled it 'plain nonsense'. Poet John Milton summed it up in *Paradise Lost*: "Confusion worse confounded."

Natural England, the Government's adviser on nature conservation, raised concerns that additional levels of new housing could lead to higher levels of nitrates due to increased amounts of wastewater.

Exhaust emissions from increased traffic passing close to The Solent or watercourses leading to it may also result in some nitrates increases.

Since April, Natural England required all house builders to quantify the nitrogen level from their development sites and to identify and mitigate any increase in the nitrates from that land.



For context it is worth noting local planning authorities around Poole Harbour have reported: Nitrogen entering Poole Harbour from the land comes from either a combination of widespread places known as 'diffuse sources', which are mainly losses from agriculture such as nitrogen fertilisers and livestock manure (85%), or from concentrated point sources such as sewage treatment works (15%).

In less than a year, yet more green fields have come under threat after Whitehall demanded that Fareham finds space for up to 2,500 extra homes on top of the 2,300 houses the Council had already been forced to add to the new Draft Plan 2011-2036.

Executive Member for Planning and Development Councillor Keith Evans said: "For all current and new planning applications Fareham planning staff are requiring developers to undertake a nutrient assessment, using Natural Eng-

land methodology.

"They must work with the Council to identify any valid mitigation – such as removing land from agricultural use which will offset any nitrates from new development."

Keith Evans added: "As a good example of this approach, the nutrient assessment of the Welborne development north of Fareham, which is being built on farming land, indicates nitrogen increase neutrality and will continue as planned."

"We will work with developers to find mitigation measures, but ultimately this issue must be dealt with at Government level. We are working with all South Hampshire councils through the Partnership for South Hampshire and other organisations to find a long-term solution.

Veteran Stanley 'overwhelmed' by Daedalus D-Day memories

NINETY nine-year-old Stanley Richardson had no idea what a memorable day lay ahead when he arrived at Daedalus Airfield for the D-Day 75th anniversary.

He was greeted as guest of honour and applauded by thousands of visitors as he was invited to join the Mayor for the unveiling of a plaque paying tribute to the bravery of the 175 pilots who flew 400 missions on June 6, 1944.

Stanley was based at HMS Daedalus as a petty officer in the Fleet Air Arm when it



was the busiest UK airfield during the Normandy invasion.

Still stunned by events unfolding around him, he said: "I'm so overwhelmed to be here. I had no idea what was happening today. It's all a big surprise."

It had been a closely guarded family secret organised by his son, Stuart, who'd driven him from his Littlehampton home.

Stanley's job during the invasion was to prepare and check the planes before they went into battle across the Channel.

He added: "I'm very proud to be here today to represent my colleagues. A lot of

them aren't here today, but I'm here for them."

Over 15,000 attended the two-day show during which there was a full programme of events.

Static aircraft proved a great attraction but bad weather shortened the flying display until late Saturday, when the Dakota arrived to the delight of the crowds.

It had improved next day and flypasts by a Spitfire, Dakota and gyrocopter went ahead, as did the Great War Display Team flying replica aircraft and the Royal Navy Raiders performing an exciting parachute display. The Red Arrows capped an unforgettable weekend.

PHOTO: Stanley Richardson chats to Fareham Mayor Pamela Bryant.

NEWS ROUND



Email delivery

Titchfield and Titchfield Common Branch is offering an alternative method to receive your InTouch editions.

If you would like to have editions emailed to you please contact Councillor Sarah Pankhurst on sarahpankhurst@gmail.com.

Please note - we will not pass your email addresses to any third party. The details will be held strictly private and confidential in line with Data Protection requirements.

If you're interested in viewing via Facebook, please also let us know.

Housing help available

Assistance with housing need is available to households earning up to £80,000 pa, according to Government rules.

The Council is currently consulting on its rules for allocating social housing to categories of need.

Residents with views on categories and priorities should contact the Council's housing department or local councillors who will represent your views during the consultation.

It's an important exercise as the outcome will dictate who does and doesn't get access to the precious supply of council houses in the Borough.

Outstanding

Hampshire Children's Services have received an 'outstanding' Ofsted grading for overall effectiveness in all areas.

Hampshire is only the second county in England to have received this level of overall assessment.

County Councillor Keith Evans said: "Really welcome confirmation of the skills and dedication of the social workers and continuing commitment to high standards."

Appeal victories

Fareham Council won its last 4 housing appeals against large developments in what we are sure is most welcome news to residents.

Kids learning to grow as they grow up



CHILDREN at Titchfield Primary School are being encouraged to 'grow their own'.

They have planted vegetables, herbs and other specimens in an exciting new allotment featuring colourful circular raised beds (pictured) specially designed for little ones.

It was opened by Fareham Mayor Councillor Pamela Bryant, who is pictured with Mayoress Councillor

Louise Clubley and head teacher Michelle Stephens.



Strawberry fayre was a big hit

FRIENDS of Titchfield Primary School organised a strawberry fayre on a sunny July day.

Among the guests were Councillors Connie and Geoff Hockley.

Connie said: "It was a huge success, with children and families enjoying lots of activities from face painting to watching a demonstration by Luna Aeria and Acrobats.

"Probably the star attraction was a performance by The Steel Pans on the pirate ship."

Geoff is pictured with deputy head teacher Seb Olway drawing the ticket for the main prize when a lucky young lad won a bicycle.



Titchfield hoists its new historic flag



NEW signs with a new emblem will welcome visitors to historic Titchfield.

Villagers got together to freshen up first impressions upon entering the village as the old signs looked tatty.

Sean Searight (pictured above right) chaired a team of local enthusiasts who decided an emblem combining key historic data was needed.

Designs were started over a few beers in the Queen's Head, which probably contributed to the colourful result.

A public consultation was carried out and it was decided the signs should be in place for July's 'In Bloom' competition.

Look out for the signs in St Margaret's Lane, East Street and Posbrook Lane.

Councillor Connie Hockley thanked the locals who helped to organise the purchase and fitting of the new signs – Kevin Fraser, Phil Burner, Joe Folland and Mark Rowe (pictured above left) from Hampshire Highways Traffic Department.

The emblem was hoisted in East Street (pictured below) and is now flying proudly around the streets, complementing the fine floral displays.



Villagers' floral displays deserve gold award



IT WAS the day of judgement for Titchfield.

The village's entry into the annual South and SE In Bloom competition came under close scrutiny.

Judges John Lockwood and Kevin Tait were welcomed by Gloria Hunt and her team of volunteers, and children from Titchfield Primary School explained their water flowing model.

Councillor Connie Hockley said: "As Gloria explained to the judges, it is not just about flowers.

"Their aim is to support and nurture sustainability, recycling and the

environment, work with young folk and ensure community involvement.

"This fledgling team have worked miracles to the benefit of the wider community.

"Thank you very much for your commitment and dedication.

"I am sure the judges were very impressed at what Titchfield in Bloom has achieved in two years and I look forward to seeing them collect a Gold Award at the awards ceremony in September."

PHOTOS: (l to r) Sue Brindle, Julie Nash, Coral Wood (behind)



Gloria Hunt, Marilyn Wilton-Smith (blue/pink top) Pamela van Reyden. On step Nicky Zaki and Jane Bradley. (Above) Titchfield Primary School's floral water model

Poor turnout for referendum

LESS than a third of villagers bothered to turn out for the first referendum to be held in Fareham regarding the Titchfield Neighbourhood Plan (TNP).

Just 31% decided this issue – 'Do you want Fareham Borough Council to use the Neighbourhood Plan for Titchfield to help it decide planning applications in the neighbourhood area?'

363 (60%) voted 'No' and 241 (40%) voted 'Yes' and as less than 50% voted 'Yes', the TNP will not form part of the statutory Fareham Borough Local Plan.

Neighbourhood planning was introduced through the Localism Act 2011 for communities to shape development in their area through the production of Neighbourhood Development Plans.

These plans, become part of the Local Plan and the policies contained within them are then used in the determination of planning applications.

Think before you call an ambulance

A HEALTH advisor's duty can be stressful, taking calls ranging from a fall or toothache to life or death situations, says Sarah Pankhurst.

"We are members of the public with special training trying to help those who call us.

"However, I think my work as a councillor has helped give me confidence to be an important link for patients to get the right sort of help."

After 4 years as a NHS 111 call handler at South Central Ambulance Service, she works nights alongside the 999 service and says there

are grey areas over when to call an ambulance.

"When you think a medical emergency is taking place, should you call an ambulance for toothache, tummy ache, nausea or drunkenness, or for a patient with chest pain, breathing difficulties or where a patient is unconscious?"

"There is a thin line between many cases and circumstances can change very quickly. Just think before you make that choice – 999 Emergency or 111 Non-emergency?"

"Either way, your NHS 111 and 999 services care about their patients, whatever their condition."

BOROUGH COUNCILLORS Titchfield



Connie Hockley
27 Heath Lawns
Catisfield
Fareham PO15 5QB
Tel: 01329 287365
email: chockley@fareham.gov.uk



Tiffany Harper
20 Hampton Grove
Catisfield
Fareham PO16 5NL
Tel: 01329 844074
email: tharper@fareham.gov.uk



Sarah Pankhurst
Flat 6C, 118 Wickham Road
Fareham PO16 7FP
Mobile: 07701 393396
email: spankhurst@fareham.gov.uk



Geoff Hockley
27 Heath Lawns
Catisfield PO15 5QB
Tel: 01329 287365
email: geoff.hockley@hants.gov.uk

COUNTY COUNCILLORS Fareham Titchfield

Keith Evans
94 Abshot Road
Titchfield Common PO14 4NH
Tel: 01489 582450
email: keith.evans@hants.gov.uk





Support new PM and focus on exiting EU

There are many reasons to be optimistic.

With a new Prime Minister, Boris Johnson, the country can unite and focus on leaving the EU by 31st October.

Our new PM has also prioritised investing in the Police so we have more bobbies on the beat – something we desperately need in Fareham to stop anti-social behaviour – and increasing funding for local schools.

Above all, we must never allow Jeremy Corbyn to enter Number 10. His brand of Socialism (modelled on Venezuela) would bankrupt the country and diminish the UK's place in the world.

In personal news, my son, George Jeffrey, was born on 10th July. My husband, Rael, and I are delighted.

Like many working mums, I am taking a period of maternity leave, but my office will be fully operational.

If you need assistance on any matter, get in touch and I will continue to work on your behalf: it's business as usual for Fareham residents.

Suella

BRAVERMAN MP for Fareham

Fareham Community Hospital (FCH) Taskforce, which I set up and chair, has published a report welcoming the GP-led Same Day Access Service.



Hospital, which sits on the Taskforce, said:

“The Friends are pleased that our local MP has shown such an interest in Fareham Community Hospital and hope some of the

ideas in this report are taken on board by the Fareham & Gosport Clinical Commissioning Group, the general practices, Hants County Council, health trusts and others providing services to the hospital.

It calls for its further rollout, better public transport links, greater collaboration with the voluntary sector and more signposting to mental health services and support services for the elderly.

The report sets out a vision of how we could better use FCH. You can find it here: https://issuu.com/suellabravermanmp/docs/fch_future_vision

It was published just as Portsmouth Hospitals Trust confirmed to me that it will deliver a renal/dialysis training hub at FCH to support patients with kidney problems, saving them the travel to QA Hospital.

The Friends of Fareham Community

PHOTO: Suella held her 3rd annual health summit at Fareham Community Church with 100 residents attending.

CONTACT SUELLA

14 East Street, Fareham PO16 0BN

Tel: 01329 233573

Email: suella@suellabraverman.co.uk

Facebook: [fb.com/SuellaBraverman](https://www.facebook.com/SuellaBraverman)

Multi-million upgrade for a very special school

A SPECIAL school with a special place in Fareham community is to receive a long-overdue multi-million revamp.

The County Council voted to spend £4.39m to upgrade St Francis School in Oldbury Way and work could begin this year with completion by 2020.

The building is 42 years old and is inadequate to accommodate almost 100 pupils aged 2-19 with severe – and in some cases – multiple learning difficulties.

County Councillor Geoff Hockley said

the school was undersized and required considerable investment to improve the building and address shortcomings in the accommodation to meet increasingly complex needs of its pupils.

He said: “There is a need for extra classrooms with accompanying hygiene rooms and toilets, as well as some specialist learning spaces to the central circulation space, including a new ramp to improve access.”

St Francis has an impressive reputation and its last Ofsted inspection in 2018 produced a glowing report.

INSPIRATIONAL

After a recent visit, Fareham MP Suella Braverman said:

“Good to pop into St Francis’ Special School and catch up with inspirational Head, Steve Hollinghurst.

“Thank you to the team of dedicated staff and teachers for all you do to make this school - and Heathfield - excellent places of learning.”



Date fixed to select contractor for major Ferneham Hall revamp

FERNEHAM HALL will close in January 2020 after the annual panto season at the start of its multi-million revamp.

It attracted wide interest when the Council advertised for contractors.

As this is such a large project, the procurement has been done in several



phases to ensure we pick the right contractor at the right price.

Not only do we want a fantastic facility but we need to ensure value for money. There's a great deal of interest in this project and we want to

make sure it's amazing.

Tender deadline was the end of July and a contractor will be appointed

on September 26 at a special Council meeting.

Architects with extensive experience in remodelling entertainment venues are working on plans for the project and keeping in touch with potential contractors to ensure the timetable for completion and the budget can be met.

The plans and budget should be agreed by early autumn with planning permission sought shortly after.