



InTouch

PORTCHESTER & DOWNEND – Summer 2018

Fury as new housing criteria wreck Fareham draft plan

NEW HOUSING levels forced on Fareham by Government will wreak havoc with the draft planning strategy, putting hundreds more acres of countryside under the bulldozers.

Whitehall moved the goal posts by applying a new factor relating to the ratio of average income to average house prices.

Fareham must now find yet more space to cram in another 1,500-2,000 homes – doubling the current number of greenfield houses required.

Work preparing the well-advanced draft local plan has been halted and much of it will have to go back to the drawing board.

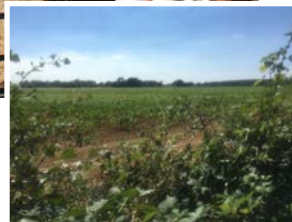
And there's worse to come when yet another Government rule change – the Housing Delivery Test – comes into force in November.

Furious councillors rounded on the minister responsible, James Brokenshire, telling him enough is more than enough.

Council Leader Seán Woodward and MP Suella Braverman will meet the Secretary of State and lay it on the line that the Borough should not be expected to cope with an ever-rising volume of housing thrust on it by Whitehall.

Councillor Keith Evans, executive member for planning and development, said: "We responded to the Government by rejecting the proposals as unreasonable and unachievable in the short term. It fell on deaf ears.

"We have to decide how to incorporate these additional requirements and consult on the new recommendations.



"All this will take additional time and leaves the Council exposed to even more unwelcome applications."

Fareham had already met previous Government criteria by objectively assessing the 5-year housing supply requirement.

This showed 11,300 homes were needed. After discounting Welborne (3,840), completions and permissions (2,995) and remains from the existing plan (208), the Council had to accommodate an extra 4,250 and had managed to find brownfield and windfall sites for around 2,000.

When developers learned the rest had to come from greenfield sites, it sparked a Klon-dyke-style rush with over 100 proposals totalling 12,700 homes submitted against the 2,500 still needed.

As Fareham cannot now publish its new plan, it must consider applications without the protection of the usual planning policies.

Under the fresh Government diktat, the 5-year housing land supply (5YHLS) will see the current annual need for 487 dwellings raised to 571, assuming a 5% buffer.

If Fareham fails the Housing Delivery Test, the figure could go up to 653 per annum for the next 5 years, with massive extra impact on the suspended draft local plan

PHOTOS: Proposed Old Street development will have a major impact on Titchfield Haven Nature Reserve. Inset: 1,100 homes could go on 270 acres between Longfield Avenue and Stubbington.

Fareham pioneers first conference to deal with rough sleepers problem

GIVING money to begging rough sleepers will not help to remove them from the Borough's streets.

Donating it directly to many local charities which are working hard to help the homeless is a far better idea.

This was the conclusion of more than 70 delegates who attended the first conference hosted by Fareham Council to tackle the problem.

Its aim was to share information and identify strategies to support the work

of agencies and to launch 'Fareham StreetAid', a new initiative through which joint communications can be published.

Charity outreach workers said drug addiction was one of many issues they dealt with daily, so any money given would simply be used to fund that habit.

Council Leader Seán Woodward said: "We are determined to help rough sleepers off the streets rather than helping them to stay on the streets.

"That is why it is so important that people who wish to offer support such as money, food, sleeping bags, clothing etc should give it to the local charities who, with support agencies, deliver what is needed to these vulnerable people."

• Rough sleepers can get free meals and a bed at Two Saints hostel, where they also have access to help and advice from trained staff.



NEWS ROUND



Sue Bell thanks supporters

"I would like to thank all residents who supported me in the Borough Elections on May 3. I increased my majority and was humbled to be re-elected.

"I will continue to represent all the residents of Portchester West and Downend.

"We face considerable challenges regarding the ever-growing housing requirements and it will be no mean feat to try to provide housing sites within suitable sustainable locations across the Borough.

"Contact me if you have any queries and I will try to find a solution."

Moraunt Drive planning appeal

Radian Homes have lodged an appeal against the Council, which refused their application for 49 houses off Moraunt Drive.

They have also lodged a new planning application which will need to be determined by the Council with one less dwelling.

Access is still off Moraunt Drive with a change in the design of some dwellings and a reduction in affordable housing.

Salt bin request agreed

Following a request from residents of Redwood Drive and Boxwood Close, Councillor Sue Bell reports that Hampshire County Council has agreed to install a salt bin.

The precise location is being agreed with the Borough Council and the bin will be installed shortly.

Upgrades for play areas

Play areas at Castle Street and Portchester Park went out to consultation in May.

Residents, and importantly children, were asked to vote for which new play equipment they would like to see from a range offered.

Works to improve both play areas will take place in early 2019.

Why not "like" our facebook page - In Touch with Portchester West.

Honour award for local schools governor

A PORTCHESTER resident, Denise Fletcher-Lance, was made a Citizen of Honour by Fareham Borough Council. Denise has been a school governor in Fareham schools for 24 years.

She initially served at Castle Primary School as governor and chair of governors, then most recently as chair of governors at Portchester Community School.

She dedicates her time and expertise to supporting young people across the Portchester area, both through the school and as a trustee of the Portchester Community Centre.

PHOTO: Denise is pictured with last year's Mayor, Councillor Geoff Fazackarley, who presented her award.



Royal Marines herald county's new High Sheriff

THE BAND of HM Royal Marines put on an impressive performance against the backdrop of Portchester Castle at a reception for Hampshire's new High Sheriff.

Mark Thistlethwayte (inset), whose Hampshire family roots go back 500 years, will hold the unpaid ceremonial post, which dates from just after the Norman Conquest, for a year.

He and his family are well known supporters of local charities. Mr Thistlethwayte, a former City of London accountant, set up Buckland Capital Partners in 2008.

Its property arm is the lead developer for the 6,000 homes to be built at Welborne garden village.



Queen's Award for One Community volunteers



ONE COMMUNITY has deservedly received the highest accolade for voluntary groups in the UK – The Queen's Award for Voluntary Service.

Councillor Sue Bell, executive member for leisure and community, said:

"I was absolutely delighted to receive this wonderful news, a tremendous award for the organisation. Well done everyone."

It is believed to be the first community voluntary service in Hampshire to receive the prestigious award.

Since 2015, One Community has been working with Fareham Borough Council to deliver a new initiative in the known as 'The Big 3', a package of support for local groups comprising funding, governance and building community resilience, volunteer and skills support.

Sue Bell said she was honoured to spend an evening with the volunteers, presenting them with certificates and thanking them for their dedication.

PHOTO: Sue Bell with the One Community volunteers after the presentation of certificates at Ferneham Hall.

County Council cuts blamed for Borough weeds invasion



WEEDS are running riot in streets and footpaths across Fareham Borough.

Warm weather and thunderstorms have combined to help them grow at an alarming rate.

Residents are demanding that the County Council, which is responsible for highways weed control, should take urgent action to clear up the unsightly mess.

Up to this year, the County Council undertook pesticide spraying on roads and pavements twice a year to kill the weeds, which were then removed by Fareham Council's street sweeping service.

But Hampshire reduced the treatment to once a year to cut costs.

Councillor Nick Walker said: "It's a false economy as it simply allows the weeds to take greater hold and causes damage to the highways for which the County Council will have to pay to put right."

"We are working with the Borough Council to find ways of introducing new weed removal methods which will not involve the use of pesticides and working with the County Council to bring the weeds back under control."

PHOTO: Portchester Councillor Nick Walker shows the untidy mess by encroaching weeds in Quintrel Avenue.

Dust up as work begins at Cranleigh

WORK has started on the Cranleigh Road site and clouds of dust are being created by machines.

It has upset residents and children at nearby Wicor School.

Portchester Councillor Nick Walker asked Council planning officers to contact developer Miller Homes to take measures to alleviate the nuisance.

Miller Homes have brought in a water bowser in a bid to reduce the dust.

The developers have also submitted an

application to allow excavation material to be used on the open space site provision to create artificial mounds at varying heights to save removing this material by many lorry movements.

Concerns have been raised by residents that this will alter the relatively flat nature of the open space and destroy the remaining wildlife and ecology of the site.

Despite fierce opposition, Miller Homes won consent to build 120 homes on appeal.

Gala success

PEOPLE flocked to Portchester Gala, the community-run event that dates back over 100 years.

Led by Hampshire Caledonian Pipe Band, the procession began at Wicor School and paraded along White Hart Lane and Castle Street.

There was a vintage and military cars display, stalls and a funfair.

Councillor Sue Bell said: "Thanks to Portchester Community Association and everyone involved in making the event another success for Portchester."



BOROUGH COUNCILLORS Portchester West



Nick Walker
Turret House, Hospital Lane
Portchester, Fareham PO16 9LT
Tel: 023 9238 4943
Email: nwalker@fareham.gov.uk

Sue Bell
Turret House, Hospital Lane,
Portchester, Fareham PO16 9LT
Tel: 023 9238 4943
Email: sbell@fareham.gov.uk



COME AND JOIN US

If you support Conservative principles and would like to vote to select your Council and Parliamentary candidates, to attend social and political events or help us by delivering InTouch in your street, then why not join Portchester Branch of Fareham Conservative Association? Please phone Nick Walker or Sue Bell on 02392 384943.

WE SERVE YOU ALL

Whether you voted for us or not, your Conservative councillors promise the highest standards of service to everyone in the community. Contact us any time and we'll respond personally within 48 hours.

Tired old Ferneham Hall to get a multi-million pound refurbishment

FERNEHAM HALL, Fareham's top venue for stage shows, exhibitions and main events will be closed at the end of 2019 for a massive multi-million pound overhaul to meet 21st Century demands.

After almost 40 years' service, the building is looking tired, dated and in need of a facelift and the Executive decided it was time to meet modern community demands.

Portchester Councillor Sue Bell, executive member for leisure and community, said: "In 2015, a feasibility study showed the layout and design no longer met customer expectations which have changed significantly since 1982.

It means temporary venues will have to be found elsewhere across the Borough and when the hall reopens it will be under a new management structure.

But it will also fulfil one of the **Conservative** Council's long-awaited ambitions to provide a community venue in the town centre.

Councillor Bell said: "Remodelling of Ferneham Hall offers a real opportunity to combine a new arts and entertainment venue with a busy community facility.

"A key part of this vision is to plan a new facility which will be more commercial in its outlook and this will be achieved by appointing an operator."

Today's patrons demand large, air-conditioned buildings with space and natural light, auditoria with comfortable seats, unrestricted views, wheelchair access and café fa-



ilities. So the new Ferneham Hall will include:

- Alterations to foyer and box office area to provide a sense of arrival
- Improved audience facilities, toilets, catering areas, in terms of comfort, appearance and overall experience
- Improved access including a lift
- Fuel efficiency – individual parts to be lit, heated and ventilated independently
- Improved cast/crew areas, including stage and back-stage, to support high quality performances
- Community rooms for hire and/or workshops enabling venue to operate as a busy community centre
- Reduce size, improve comfort of main auditorium to suit audience numbers (400-500

- seats)
- Smaller, intimate secondary performance space (100 seats) including screen and projector room
- Options for retractable seating and dance studio with sprung floor

When it reopens it will be under the management of a leisure trust operator.

Future operations will be based on the premise that the Borough Council owns the hall, the leisure trust manages it and the Council pays an annual revenue contribution to the trust until there is no deficit.

Sue Bell added: "Our vision is to provide a busy community and entertainment venue which includes daytime and evening activity, seven days a week.

"Our new-look building will offer a great choice of entertainment and provide new community facilities for those living around the town centre."

Start is imminent on M27 and M3 Smart Motorway work

HIGHWAYS England will shortly start work on a major scheme to increase the capacity of the M27 by a third between junctions 4 and 11 and the M3 between junctions 9 and 14.

It includes a replacement M27 all-moves junction 10 to serve Welborne.

The design for junction 10 is currently with Highways England for sign-off, so the Council will be able to determine the Welborne planning application for 6,000 new homes over the next 25 years.

Council Leader Seán Woodward,



pictured with Regional Sponsor for Smart Motorways Adrian McCrow, said:

"I have campaigned for years to see the M27 and southern section of the M3 upgraded to Smart Motorways and am delighted that £500m are now being spent to do just that.

"A third increase in capacity will bring many benefits to businesses and residents who suffer daily on these roads. Delays cost money, put off trade and add to pollution.

"I believe concerns about the loss of a hard shoulder are unfounded as many 70mph dual carriageways work well with an occasional lay-by.

"Thirteen emergency refuges will be placed on the M27 – one every 75 seconds for somebody travelling at 60mph."

